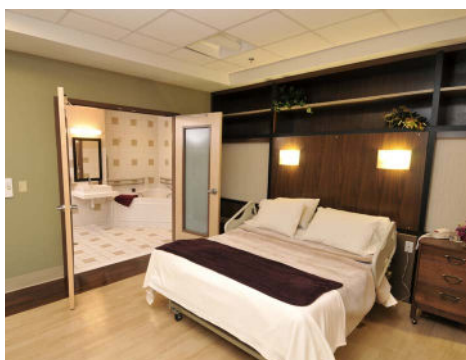
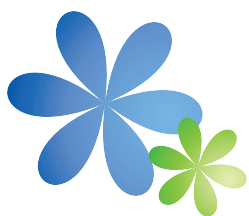


"Lovelace Women's Hospital has earned multiple awards for the quality of our care as New Mexico's only hospital devoted to women's health. Whether it be our labor and delivery services, Level III Neonatal Intensive Care Unit (NICU), Breast Care Center or robotic surgery services, patients and their families trust that we will deliver a high-quality, extraordinarily safe health care experience. Our providers and staff members work hard to ensure our patients receive the highest quality of care; and it shows."



Amy Blasing
Chief Executive Officer



Family Care Unit



Overview

Lovelace Women's Hospital (LWH) is New Mexico's first and only hospital dedicated to women's health and features a Level III Neonatal Intensive Care Unit, 24/7 emergency department, 20 labor and delivery rooms, 31-bed Mother-Baby unit and a Maternal Fetal Medicine program for high-risk pregnancies. LWH offers a nationally accredited Breast Care Center providing the latest in 3D mammography and surgical procedures. LWH is also the first Center of Excellence for Minimally Invasive Gynecology, Robotic Surgery and Hernia Surgery in the state, offering the latest in minimally invasive surgery with less pain, shorter hospital stays and faster recovery for many gynecological and urological procedures. Additionally, the hospital has 8 Intensive Care Unit beds and 73 Medical Surgical beds.

LWH is the only hospital in New Mexico to earn an "A" Leapfrog Hospital Safety Grade for Spring 2025, a national distinction recognizing its achievements of protecting patients from harm and error in the hospital.

2024 Statistics:

- Number of employees: 731
- Licensed beds: 173
- Outpatient visits: 117,825
- Births: 2,744
- Neonatal Intensive Care Unit beds: 53
- Inpatient admissions: 6,627
- Emergency Department visits: 26,731
- Surgical cases: 6,682

Facts About Lovelace Health System

- A network of acute care hospitals and health care clinics serving patients throughout Albuquerque, Rio Rancho and Southeastern New Mexico
- More than 50 medical specialties
- With more than 300 providers, Lovelace Medical Group is providing quality primary and specialty care services to the greater Albuquerque area, Rio Rancho and Southeastern New Mexico
- We accept most major insurance plans, including Blue Cross and Blue Shield of New Mexico, United Healthcare, Aetna Medicare & Commercial, Humana Medicare, SCAN Health Medicare, Medicare and all Medicaid/Turquoise Care plans, including Presbyterian Turquoise Care, Molina and many others.

List of Services

BREAST CARE CENTER

- 2025 Women's Choice Awards® as a Best Hospital for Comprehensive Breast Care
- Accredited by the National Accreditation Program for Breast Centers for providing the highest level of quality care
- Multidisciplinary team, including breast surgeons, radiation oncologists, medical oncologists, pathologists, diagnostic

- radiologist and reconstructive surgeons
- Certified Breast Care Navigator to assist patients through treatment and after-care
- Only hospital in the state to offer breast free flap reconstructive surgery and Intraoperative Radiation Therapy (IORT)
- State-of-the-art technology, including digital and 3D mammography

FAMILY CARE UNIT

- 24/7 OB anesthesia
- Antepartum Unit
- Antenatal Testing Unit
- Baby-Friendly® designated birth facility
- Childbirth education classes
- G.R.A.C.E. program for expecting moms struggling with substance use
- Hydrotherapy during labor with jetted tubs

- Lactation services
- Mommy massage
- Natural birth option
- Obstetrics and midwifery services
- Traditional & high-risk OB
- Vaginal delivery after C-Section (VBAC program)

HIGH RISK OB PROGRAM

- 24/7 perinatology coverage
- Diabetic education
- Genetic counseling
- Ultrasonography

- Outpatient Maternal Fetal Medicine
- Satellite clinics in Roswell and Santa Fe
- Virtual support for rural facilities in Northern New Mexico

HOSPITAL SERVICES

- 24/7 emergency care
- Adult ICU
- Cardiology
- Cardiopulmonary

- Continence Care Program
- Medical/Surgical beds
- Pulmonology
- Rehabilitation, inpatient and outpatient

NEONATAL INTENSIVE CARE UNIT (NICU)

- Level III NICU with 50+ beds
- 24/7 neonatologist coverage
- Pediatric subspecialties

- Multidisciplinary team approach, including respiratory, physical, occupational and speech therapies, and highly credentialed nurses

RADIOLOGY SERVICES

Same-day and next-day appointments for many radiology services.

- CT
- DEXA scan
- 3D mammography
- Fluoroscopy
- MRI

- Nuclear medicine
- Ultrasound
- Vascular lab
- X-ray

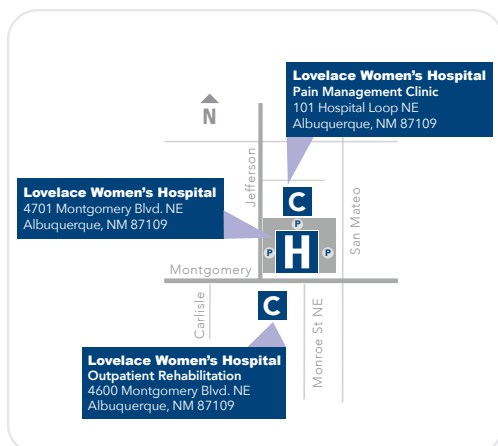
SURGICAL SERVICES

- Advanced laparoscopic surgery
- da Vinci Robotic Surgery program
- Endocrine surgery
- ENT
- Gastroenterology
- General surgery
- Gynecology oncology
- Gynecology surgery
- Hand surgery

- Oncology surgery
- Oral & Maxillofacial
- Orthopedics, including total joint replacement and robotic surgery
- Pain management
- Reconstructive surgery, including microvascular flap surgery
- Urology
- Urogynecology



WHERE TO FIND US



Lovelace Women's Hospital complies with the applicable Federal civil rights laws and does not discriminate on the basis of race, color, national origin, age, disability or sex.

ATTENCIÓN: si habla español, tiene a su disposición servicios gratuitos de asistencia lingüística. Llame al 1-505-727-8000.

Díí baa akó ninizín: Díí saad bee yánilti'go Diné Bizaad, saad bee áká'ánida'áwo'dęę', t'áá jiiik'eh, éí ná hólo, kóji' hódíilnih 1-505-727-8000.

37009 REV0525