

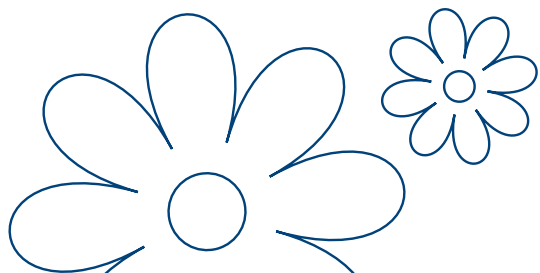
lovelace medical group *providers*

To schedule an appointment or help choosing a provider, please visit lovelacemedicalgroup.com.

For providers, please fax all referrals to 505.727.9593.

For referral questions, call 505.727.6390.

For medical records, call 505.727.6395 or fax 505.727.9590.



Lovelace
Medical Group

Bariatrics

4420 Irving Blvd NW
Albuquerque, NM 87114
Ph: 505.727.2790

Providers:

David May, D.O.	Celia Jones, NP
Nirja Kafle, FNP-BC	Amanda Walker, RD, LD
Sara Grandy, MS, RD	

Breast Care

4705 Montgomery Blvd NE
Albuquerque, NM 87109
Ph: 505.727.6900

Providers:

Darcy Cooke, PA-C	Cal Ridgeway, M.D.
Rosemary Rodriguez, PA-C	

Cardiology

502 Elm St NE
Albuquerque, NM 87102
Ph: 505.841.1000

Providers:

GENERAL CARDIOLOGY:

Michael Adjei-Poku, M.D.	Munif Hussein Alkouz, M.D.
Eddie Brown, M.D.	Charles Kim, M.D.
Katherine Oberg, PA	Lakshmi Parvathaneni, M.D.
Mel Peralta, M.D.	Mridula Rai, M.D.
Maithili Shenoy, M.D.	Karen Sopko, M.D.
Laura McDermott, NP	Geoffrey Steffens, NP
Celia Yazzie, AG-ACNP	

CARDIOTHORACIC SURGERY:

Dana Booth, M.D.	Brian Castlemain, M.D.
Luis Cerda, M.D.	Kevin Richardson, M.D.

ELECTROPHYSIOLOGY:

Eliana Acosta, NP	Yaw Adjei-Poku, M.D.
Michael Bestawros, M.D.	Michael Hoskins, M.D.
Sean Mazer, M.D.	Sandeep Nair, M.D.
Brad Gwyther, PA	Catherine Mahoney, NP

INTERVENTIONAL CARDIOLOGY:

Mark Bieniarz, M.D.	Stacey Clegg M.D.
Geoffrey Kunz, M.D.	William Finley, CNP
Raymond Yau, M.D.	

VASCULAR SURGERY

Trent Lee Proffitt, M.D.	Jessica Secor, M.D.
Richard Wilkerson, M.D.	

2240 Grande Blvd. SE, Suite 102
Rio Rancho, NM 87124
Ph: 505.841.1000

Providers:

Munif Hussein Alkouz, M.D.	Mel Peralta, M.D.
----------------------------	-------------------

4701 Montgomery Blvd NE
Albuquerque, NM 87109
Ph: 505.727.6971

Providers:

Karen Sopko, M.D.	Luka Exelby, ACNP
-------------------	-------------------

4801 McMahon Blvd, Suite 110
Albuquerque, NM 87114
Ph: 505.727.4440

Providers:

Michael Gurule, M.D.	Loutsios Ierides, M.D.
Michael Carpenter, PA	Roderick Woods, M.D.

1631 Hospital Drive, Suite 110
Santa Fe, NM 87505
Ph: 505.984.8012

ELECTROPHYSIOLOGY:

Benjamin Remo, M.D.

GENERAL CARDIOLOGY:

Lucas Chacon-Lutrick, M.D.	Geri Vigil-Bartles, CNP
Reed Otten, M.D.	Andrea Chavez, FNP

INTERVENTIONAL CARDIOLOGY:

Marc Levine, M.D.	Camila Maestas, M.D.
Timothy Vellinga, M.D.	Adam Ronan, M.D.

Ear, Nose, Throat & Hearing Center

1020 Tijeras Ave NE
Albuquerque, NM 87106
Ph: 505.727.1670

Providers:

Mary Es Anderson, M.D.	Leah Fry, Aud
Micaela Dagucon, M.D.	Sarah Maurer, Aud
Brian Long, FNP	Allyson Ray, M.D., FACS
Jason E. Mudd, M.D.	
Sherna Sheth, M.D.	

Endocrinology & Diabetes Care Clinic

6701 Jefferson NE
Albuquerque, NM 87109
Ph: 505.727.5010

Providers:

Kathleen Colleran, M.D.	Lisa Erefej, M.D.
Namrata Jannareddy, M.D.	Lynda Shey, APRN
Marta Terlecki, M.D.	

Gastroenterology

4705 Montgomery Blvd NE, Suite 201
Albuquerque, NM 87109
Ph: 505.727.7833

Providers:

Bridget Coyne, CNP	Julie Farrer, M.D.
Jessica Ryder, PA-C	

10511 Golf Course Rd NW, Ste 204
Albuquerque, NM 87114
Ph: 505.727.7833

Providers:

Chinonyerem Enyinna, M.D.	Leslie Monagle, FNP
---------------------------	---------------------

500 Walter St NE, Suite 401
Albuquerque, NM 87102
Ph: 505.727.7833

Providers:

Genevieve Davis, CNP	Laura LeBlanc, CNP
----------------------	--------------------

General Surgery

715 Dr. Martin Luther King Jr. Ave, NE, Suite 301
Albuquerque, NM 87102
Ph: 505.727.7090

Providers:

Craig Gilcrease, PA-C David Hoang, M.D.
Emily Hunter, PA-C Erica McBride, DO
Rio Udell, PA-C

6701 Jefferson NE
Albuquerque, NM 87109
Ph: 505.727.7050

Providers:

Michael Blea, M.D., F.A.C.S Amy Bower, PA-C
Mario Leyba, M.D. Christina Parks, NP
Corinthian Snodgrass, PA-C Stephen Soltero, PA

4420 Irving Blvd NW
Albuquerque, NM 87114
Ph: 505.727.2790

Providers:

David Freeman, M.D. David May, D.O.
Reagan Martin, PA-C

Internal Medicine

6701 Jefferson NE
Albuquerque, NM 87109
Ph: 505.727.6200

Providers:

Rosa Galvez, M.D.

3900 Las Estancias Ct SW
Albuquerque, NM 87121
Ph: 505.727.4200

Providers:

Fredie Diaz, M.D.

4420 Irving Blvd NW
Albuquerque, NM 87114
Ph: 505.727.6300

Providers:

Khadija Mamsa, M.D.

Interventional Radiology

601 Dr Martin Luther King Jr Ave NE
Albuquerque, NM 87102
Ph: 505.835.1615

Providers:

Matthew Bordegaray, M.D. Kirk Giesbrandt, M.D.

Medical Oncology

715 Dr. Martin Luther King Jr Blvd. Ste. 102
Albuquerque, NM 87102
Ph: 505.727.3040

Providers:

Muhammad Anas Tarakji, M.D. Paul Brittain, M.D.
Malcolm H. Purdy, M.D. Jerry Tucker, RD, LD, CLC
Yubao Wang, M.D.

Neurology

500 Walter St NE, Suite 401
Albuquerque, NM 87102
Ph: 505.727.5910

Providers:

Kader AbdeleRahman, M.D. Saleem Al Mawed, M.D.
Vanessa Licona SanJuan, M.D. Daniel Shibuya, M.D.

Neurosurgery

500 Walter St NE, Suite 401
Albuquerque, NM 87102
Ph: 505.727.5910

Providers:

Mark Bryniarksi, M.D. Mary Elizabeth Trujillo, CNP

OB-GYN

4705 Montgomery Blvd NE, Suite 301
Albuquerque, NM 87109
Ph: 505.727.4500

Providers:

Addie Gillespie, CNM, FNP-C Melanie Goldberg, CNM
Patricia A Heinz, CNM Aubrey Huerta, PA
Alexandra Lusk, M.D. Amy MacLeod, CNM, MSN
Patrisia Enriquez Najera, CNM Rachel Pirkle, CNM
Melissa C Scott, DNP, CNM Kara Shain, M.D.
Jessie Simmon, M.D., MSc Joel Teicher, M.D., FACOG
Michelle C Underwood, PA-C, MPAS Dhyana K Velasco, M.D.

10511 Golf Course Rd NW, Suite 201
Albuquerque, NM 87114
Ph: 505.727.4500

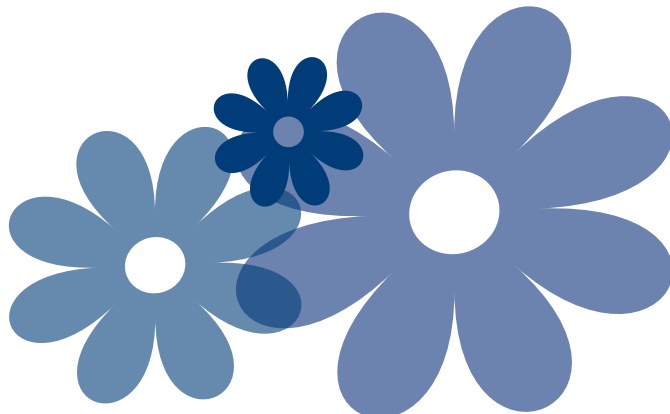
Providers:

Bethany Barrow, M.D., FACOG Brenda K Beck, CNM
Patricia Black, M.D. Ashley Jaramillo-Huff, M.D.
Audra McKillip-Heard, MSN, CNM, RN Candace Minner, CNM

6701 Jefferson NE
Albuquerque, NM 87109
Ph: 505.727.4500

Providers:

Mario Pardo-Friedman, M.D., FACOG Elizabeth Jaffa, CNM
Melynda Lopez, CNM Valerie Richerson, FNP-C
Beverly Williams, M.D.



Orthopedics

101 Hospital Loop NE, Suite 201
Albuquerque, NM 87109
Ph: 505.727.4430

Providers:

Kevin Regan, PA-C Mark Werner, M.D.

500 Walter Street NE, Suite 104
Albuquerque, NM 87102
Ph: 505.727.4430

Providers:

Consuelo J. Apodaca-Crowley, FNP-C Melinda Alfaro-Trombley, PA-C
Christopher Hanosh, M.D. Patrick Gilligan, M.D.

10511 Golf Course Rd NW, Suite 104
Albuquerque, NM 87114
Ph: 505.727.4430

Providers:

Tania Pence, D.O. Jayce Powell, FNP

Pain Clinic

LOVELACE UNM PAIN MANAGEMENT CLINIC

500 Walter NE, Ste. 213
Albuquerque, NM 87102
Ph: 505.727.7177

Providers:

Christopher Burton, D.O. Lyn Dawson, CNP
Ruben Franco, PA-C Craig Naim, M.D.
Julie Muche, M.D. Kyle Schoenberger, FNP-BC

LOVELACE PAIN MANAGEMENT CLINIC - WOMEN'S

101 Hospital Loop, Suite 109
Albuquerque, NM 87109
Ph: 505.727.4400

Providers:

Diego Gonzalez, M.D. Lauren Harris, NP

Plastic Surgery

6701 Jefferson NE
Albuquerque, NM 87109
Ph: 505.727.1700

Providers:

Teresa Casteel, NP Jeffrey Morehouse, M.D.

Physical Medicine & Rehabilitation

500 Walter NE, Ste. 500
Albuquerque, NM 87102
Ph: 505.727.7177

Providers:

Zackery Billington, D.O. W. Austin Davis, M.D.
Rebecca Dutton, M.D. Gwen Lacerda, M.D.
Emily Miller Olson, M.D.

Podiatry

10511 Golf Course Rd NW, Suite 104
Albuquerque, NM 87114
Ph: 505.727.5001

Provider:

Seth Launer, DPM, FACAS

Primary Care

6701 Jefferson NE
Albuquerque, NM 87109
Ph: 505.727.6200

Providers:

Rebecca McKee, FNP-C Mohan Muvvala, D.O.
Debra Ann Narcisse, ANP-C Nicole Nunez, NP
Katharine Pickett, M.D. Jennifer Otero, FNP-C
Janis Santistevan, FNP-C Lyudmyla Sinyenko, ACNP
Vidya Subramanian, M.D. Angelo Taraddei, FNP-C

4420 Irving Blvd NW
Albuquerque, NM 87114
Ph: 505.727.6300

Providers:

Gina Cappelle, FNP-C Diane Wright, FNP
John Bond, M.D. Christina Chen, M.D.
Shavonne Truong, FNP-C Mariah Shatto, FNP-C

3900 Las Estancias Ct SW
Albuquerque, NM 87121
Ph: 505.727.4200

Providers:

Luis Guillermo Beverido, M.D. Ximena Galarza-Rios, M.D.
Naomi Quezada, FNP-C Martha Reyes, FNP-C

Pulmonology & Critical Care

500 Walter St NE, Suite 501
Albuquerque, NM 87102
Ph: 505.727.3170

Providers:

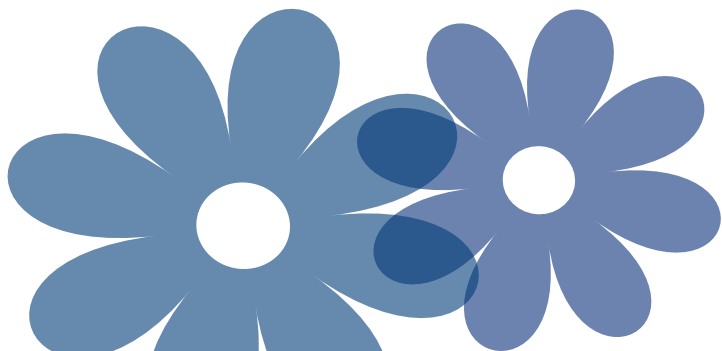
Laura Abeyta, PA-C Trisha Bank, FNP
Caitlyn Brown, NP Viral Gandhi, M.D.
Angel Gutierrez, FNP-BC Sandra Gutierrez, CNP
Camille Hernandez NP Staci Logue, PA
Jeffrey Mazer, M.D. Robyn Mitchell, APP
Sivakumar Nagaraju, M.D. Ben Paruchuri, M.D.
Jason Rotonda, CNP Heather Salazar, CNP
Derek Sandoval, CNP Tyler Shackelford, D.O.
Keely Wells, CNP

Radiation Oncology

4650 Jefferson Ln NE
Albuquerque, NM 87109
Ph: 505.727.7900

Providers:

Patrick Beagen, M.D.



Radiology - Outpatient

LOVELACE MEDICAL GROUP - INDEPENDENCE SQUARE

6701 Jefferson NE
Albuquerque, NM 87109
Ph: 505.835.1615

LOVELACE MEDICAL CENTER

601 Dr. Martin Luther King Jr Ave NE
Albuquerque, NM 87102
Ph: 505.835.1615

LOVELACE WESTSIDE HOSPITAL

10501 Golf Course Rd NW
Albuquerque, NM 87114
Ph: 505.835.1615

LOVELACE WOMEN'S HOSPITAL

4701 Montgomery Blvd NE
Albuquerque, NM 87109
Ph: 505.835.1615

HEART HOSPITAL OF NEW MEXICO

504 Elm St NE
Albuquerque, NM 87102
Ph: 505.835.1615

LOVELACE REGIONAL HOSPITAL

117 E. 19th Street
Roswell, NM 88201
Ph: 575.625.3371

Rehabilitation - Outpatient

LOVELACE UNM REHABILITATION HOSPITAL

505 Elm St. NE
Albuquerque, NM 87102
Ph: 505.727.3601

LOVELACE UNM OUTPATIENT REHABILITATION - SOUTH COORS

4250 Coors Blvd SW, Unit C
Albuquerque, NM 87121
Ph: 505.727.4961

LOVELACE UNM OUTPATIENT REHABILITATION - JEMEZ PUEBLO

129A Canal St
Jemez Pueblo, NM 87505
Ph: 505.834.9168

LOVELACE UNM OUTPATIENT REHABILITATION - RIO RANCHO

111 Rio Rancho
Rio Rancho, NM 87124
Ph: 505.727.4950

LOVELACE UNM OUTPATIENT REHABILITATION - SANTA FE

1692 Hospital Dr, Bldg. B, Suite 202
Santa Fe, NM 87505
Ph: 505.727.4971

LOVELACE UNM OUTPATIENT REHABILITATION - WYOMING

7910 Wyoming Blvd NE, Suite C
Albuquerque, NM 87109
Ph: 505.727.4888

LOVELACE WOMEN'S HOSPITAL OUTPATIENT REHAB

4600 Montgomery Blvd NE
Albuquerque, NM 87109
Ph: 505.727.4620

LOVELACE WOMEN'S HOSPITAL OUTPATIENT REHAB - HAND CLINIC

101 Hospital Loop NE, Suite 206
Albuquerque, NM 87109
Ph: 505.727.4657

LOVELACE WESTSIDE HOSPITAL OUTPATIENT REHAB

10511 Golf Course Rd. NW, Suite 205
Albuquerque, NM 87114
Ph: 505.727.2123

LOVELACE REGIONAL HOSPITAL OUTPATIENT REHAB

117 E. 19th Street
Roswell, NM 88201
Ph: 575.625.3372

Roswell Gastroenterology & General Surgery

311 West Country Club Road, Ste 1
Roswell, NM 88201
Ph: 575.625.3400

Providers:

Paul Torres, M.D.

Roswell OB/GYN

1112 N. Main St
Roswell, NM 88201
Ph: 575.627.4200

Providers:

Katrina Dowdy, CNM

Sarah Whittington, CNM

Roswell Orthopedics

115 E. 19th St.
Roswell, NM 88201
Ph: 575.625.3300

Providers:

Earl Latimer III, M.D.

Deron Ottey, M.D.

John Thomas, PA-C

Roswell Primary Care & Pediatrics

1112 N. Main St
Roswell, NM 88201
Ph: 575.627.4200

Providers:

Sarah East-Brumana, PA-C

1627 S Union Ave
Roswell, NM 88203
Ph: 575.625.3240

Providers:

Leandra Nier, ACNP-BC

Maribel Sanchez, NP

continue...

Sleep Medicine

500 Walter Street NE, Suite 501
Albuquerque, NM 87102
Ph: 505.727.4000

Providers:

Sivakumar Nagaraju, M.D.

6701 Jefferson NE
Albuquerque, NM 87109
Ph: 505.727.4000

Providers:

Colbert Chavez, M.D. Sarah Pack, FNP-BC
Richard Schumann, M.D.

Urgent Care

6701 Jefferson NE
Albuquerque, NM 87109
Ph: 505.727.0600

Providers:

Kelly Conklin, FNP-C Brittany Dow, FNP-C
Jacqueline Guinn, FNP-C Liz Kirk, FNP-C
Lynn Padilla, FNP-C Holly Stafford, FNP-C
Jeffrey Thomas, M.D.

Urology

6701 Jefferson NE
Albuquerque, NM 87109
Ph: 505.727.5080

Providers:

Jerome Baca, PA-C Heidi Barnes, PA-C
Aaron Geswaldo, D.O. Andrew Grollman, M.D.

Urogynecology

6701 Jefferson NE
Albuquerque, NM 87109
Ph: 505.727.7200

Providers:

Brook McFadden, M.D., FACOG, URPS

Lovelace Hospitals

LOVELACE MEDICAL CENTER

601 Dr. Martin Luther King Jr. Ave NE
Albuquerque, NM 87102
Ph: 505.727.8000

LOVELACE WOMEN'S HOSPITAL

4701 Montgomery Blvd. NE
Albuquerque, NM 87109
Ph: 505.727.7800

LOVELACE WESTSIDE HOSPITAL

10501 Golf Course Rd.
Albuquerque, NM 87114
Ph: 505.727.2000

HEART HOSPITAL OF NEW MEXICO

at Lovelace Medical Center
504 Elm Street NE
Albuquerque, NM 87102
Ph: 505.727.1100

LOVELACE UNM REHABILITATION HOSPITAL

505 Elm St. NE
Albuquerque, NM 87102
Ph: 505.727.4700

LOVELACE REGIONAL HOSPITAL

117 E. 19th Street
Roswell, NM 88201
Ph: 575.627.7000

Hospitalists

Ph: 505.727.8360

Serigo Abriola, M.D.	David Agyapong, M.D.
Sarah Anderson, NP	Jesse Acosta, FNP
Ahmed Alaini, M.D.	Vikram Alladi, M.D.
Harkesh Arora, M.D.	Banyar Aung, M.D.
Javed Awais, M.D.	Mario Benavidez, M.D.
Dorothy Billau, NP	Thomas Boone, M.D.
Jason Bowman, ACNP	Christopher Bradley, M.D.
Doug Brady, NP	Mary Brennan, M.D.
Devang Butani, DO	Radu Butuc, M.D.
Marshall Caraveo, M.D.	Kimberly Cantu, NP
Violet Chombwe, FNP	David Clanon M.D.
Leah Damiani Strain, M.D.	Kelli Dominguez, CNP
Victor Ekpe, M.D.	Michael Elliott, M.D.
Eleni Gianacakes, M.D.	Mark Grinman, M.D.
Prathyusha Gudapati, M.D.	Dareena Benavides, NP
Patrick Haarhues M.D.	Awais Javed, M.D.
Norbert Jay Sanidad, CNP	Ritika Kaushal, MD
Bilal Khan, M.D.	Robin Knight, M.D.
Rodgers Koech, NP	Kimberly Kozeliski, NP
Ranjit Kumar, M.D.	Tahir Mahmood, DO
Mohammad Malik, DO	Jody Masters, PA-C
Nemoli McCartney, FNP	David Podolsky M.D.
Bernadette Perea-Zamora, NP	Joseph Perea, M.D.
Sathish Ramalingam, M.D.	Cesar Ramos, M.D.
Revati Reddy, M.D.	Kevin Rosenberg, M.D.
Clay Schneider, NP	Amanda Sanchez, D.O.
Christian Smith, DO	Martin Tran, DO
Jay Tseng, M.D.	

Emergency General Surgery

Ph: 505.727.7077

Jacquelyn S. Brandenburg, D.O.	Benjamin J. Clifford, PA-C
Lynette Connacher, PA	Geri Davis, NP
Christopher Dominguez, M.D.	Omar Hashmi, M.D.
David Hoang M.D.	Kimberly Merelman, PA-C
Alberto Dominguez-Ventura, M.D.	Marchell Woodruff, PA-C

continue...

COMMERCIAL/EMPLOYER SPONSORED PLANS

Aetna
Ambetter by Western Sky Community Care - (Individual and family)
America's Choice Provider Network
Blue Cross & Blue Shield of NM
CapRock
Cigna (Roswell only)
Coventry Health Care National Network (Roswell only)
HealthSmart
Humana (Choice and Gold Choice)
Imagine Health
Mesa Mental Health Professionals
Molina Healthcare of NM (Individual and family)
Multiplan/PHCS
New Mexico Oncology Hematology
Consultants (NMOHC) - Employee, family (must verify directly with the payer to determine covered benefits)
OMNI Networks (Roswell only)
Presbyterian Health Plan (ENT, Gastroenterology, Eye surgery, Rehabilitation services only)
Provider Network of America (PNOA)
Southwest Gastroenterology Associates (Employee and Family)
TLC Plumbing (Employee and family)
UMR Ardent Employees
Zelis (Primary Direct & Supplemental Network for hospital services only)

MEDICARE/MEDICARE ADVANTAGE

Aetna Medicare
Allwell by Western Sky Community Care
All Medigap plans that serve secondary to Medicare
Blue Cross Blue Shield of New Mexico (Medicare Advantage and Dual Complete)
Employer group Medicare plans
Humana Medicare Advantage
Presbyterian Senior Plan (Dual Products Only)
Total Community Care- InnovAge
Traditional Medicare and Traditional Medicare/Medicaid Dual Products
United Healthcare Medicare Advantage (Lovelace UNM Rehabilitation Hospital services only)

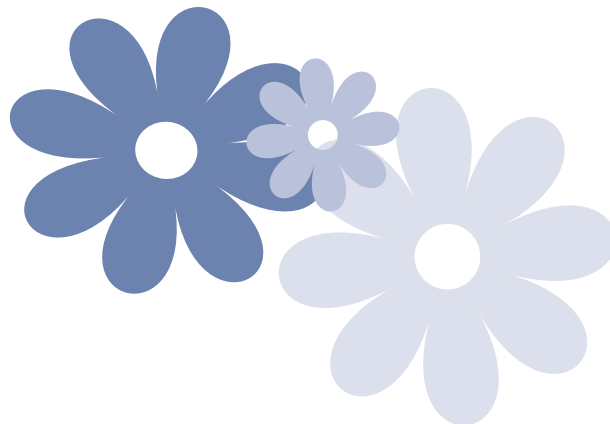
MEDICAID/MANAGED MEDICAID (TURQUOISE CARE)

Blue Cross & Blue Shield of NM
Presbyterian
Total Community Care- InnovAge
Molina Healthcare of NM
New Mexico Medicaid

GOVERNMENT PROGRAMS/WORKMAN'S COMPENSATION (WC)

ChampVA NM
Chaves County- Indigent Health Care
Community Care Network (CCN)
CorVel-WC (CVWC)
Corizon Health
Coventry Health Care National Network-WC (Roswell only)
Correctional Medical Services NM
Department of Labor NM
Indian Health Services
Pueblo of Isleta (POI)
Pronet Inmate Health Service
Sandoval County Detention
Tricare and Triwest
US Marshall Services
Veterans Health Administration- Veterans Affairs NM
Veterans Choice Program (VPC)
Workers Compensation
NM Mutual Group

For a full list of accepted insurances, visit lovelace.com



Lovelace Health System complies with the applicable Federal civil rights laws and does not discriminate on the basis of race, color, national origin, age, disability or sex.

ATTENCIÓN: si habla español, tiene a su disposición servicios gratuitos de asistencia lingüística. Llame al 1-505-727-8000.

Díí baa akó nínizin: Díí saad bee yánifti'go Diné Bizaad, saad bee áká'ánída'áwo'dęę', t'áá jiik'eh, éí ná hólo, kojí' hódíílnih 1-505-727-8000.