

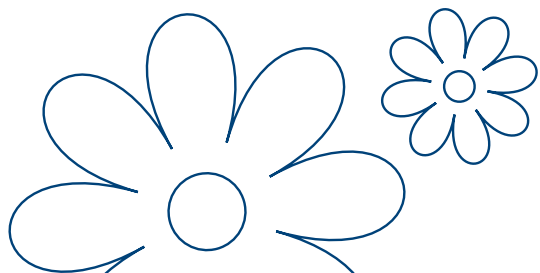
# lovelace medical group *providers*

To schedule an appointment or help choosing a provider, please visit [lovelacemedicalgroup.com](http://lovelacemedicalgroup.com).

For providers, please fax all referrals to 505.727.9593.

For referral questions, call 505.727.6390.

For medical records, call 505.727.6395 or fax 505.727.9590.



**Lovelace**  
Medical Group

## Bariatrics

4420 Irving Blvd NW  
Albuquerque, NM 87114  
Ph: 505.727.2790

### Providers:

David May, D.O.	Celia Jones, NP
Nirja Kafle, FNP-BC	Amanda Walker, RD, LD
Sara Grandy, MS, RD	

## Breast Care

4705 Montgomery Blvd NE  
Albuquerque, NM 87109  
Ph: 505.727.6900

### Providers:

Darcy Cooke, PA-C	Cal Ridgeway, M.D.
Rosemary Rodriguez, PA-C	

## Cardiology

502 Elm St NE  
Albuquerque, NM 87102  
Ph: 505.841.1000 Fax: 505.843.2593

### Providers:

#### GENERAL CARDIOLOGY:

Michael Adjei-Poku, M.D.	Munif Hussein Alkouz, M.D.
Eddie Brown, M.D.	Marcus Evans, AGACNP
Audrey Girroir, NP	Charles Kim, M.D.
Ashley Long, ACNP	Katherine Oberg, PA
Lakshmi Parvathaneni, M.D.	Mel Peralta, M.D.
Mridula Rai, M.D.	Maithili Shenoy, M.D.
Karen Sopko, M.D.	Laura McDermott, NP
Geoffrey Steffens, NP	

#### CARDIOTHORACIC SURGERY:

Dana Booth, M.D.	Brian Castlemain, M.D.
Luis Cerda, M.D.	James Dunlap, PA-C
Kevin Richardson, M.D.	

#### ELECTROPHYSIOLOGY:

Eliana Acosta, NP	Yaw Adjei-Poku, M.D.
Michael Bestawros, M.D.	Michael Hoskins, M.D.
Sean Mazer, M.D.	Sandeep Nair, M.D.
Brad Gwyther, PA	Catherine Mahoney, NP

#### INTERVENTIONAL CARDIOLOGY:

Mark Bieniarz, M.D.	Stacey Clegg M.D.
Geoffrey Kunz, M.D.	William Finley, CNP
Camila Maestas, M.D.	Raymond Yau, M.D.

#### VASCULAR SURGERY

Samantha Matteucci, ACNP	Thu Nguyen, FNP
Trent Lee Proffitt, M.D.	Jessica Secor, M.D.
Richard Wilkerson, M.D.	

2240 Grande Blvd. SE, Suite 102  
Rio Rancho, NM 87124  
Ph: 505.841.1000 Fax: 505.843.2593

### Providers:

Munif Hussein Alkouz, M.D.	Mel Peralta, M.D.
Mark Bieniarz, M.D.	

4701 Montgomery Blvd NE  
Albuquerque, NM 87109  
Ph: 505.727.6971 Fax: 505.843.2593

### Providers:

Michael Adjei-Poku, M.D.	Lakshmi Parvathaneni, M.D.
Mridula Rai, M.D.	Maithili Shenoy, M.D.
Karen Sopko, M.D.	Luka Exelby, ACNP

4801 McMahon Blvd, Suite 110  
Albuquerque, NM 87114  
Ph: 505.727.4440 Fax: 505.843.2593

### Providers:

Michael Gurule, M.D.	Loutsios Ierides, M.D.
Michael Carpenter, PA	Roderick Woods, M.D.

1631 Hospital Drive, Suite 110  
Santa Fe, NM 87505  
Ph: 505.984.8012 Fax: 505.843.2593

#### ELECTROPHYSIOLOGY:

Benjamin Remo, M.D.

#### GENERAL CARDIOLOGY:

Jose Gonzalez, M.D.	Lucas Chacon-Lutrick, M.D.
Geri Vigil-Bartles, CNP	Reed Otten, M.D.
Andrea Chavez, FNP	

#### INTERVENTIONAL CARDIOLOGY:

Marc Levine, M.D.	Timothy Vellinga, M.D.
Adam Ronan, M.D.	Mark Zolnick, M.D.

## Ear, Nose, Throat & Hearing Center

1020 Tijeras Ave NE  
Albuquerque, NM 87106  
Ph: 505.727.1670

### Providers:

Mary Es Anderson, M.D.	Micaela Dagucon, M.D.
Leah Fry, Aud	Brian Long, FNP
Sarah Maurer, Aud	Jason E. Mudd, M.D.
Allyson Ray, M.D., FACS	

## Endocrinology & Diabetes Care Clinic

6701 Jefferson NE  
Albuquerque, NM 87109  
Ph: 505.727.5010

### Providers:

Kathleen Colleran, M.D.	Lisa Ereifej, M.D.
Marta Terlecki, M.D.	Namrata Jannareddy, M.D.

## Gastroenterology

4705 Montgomery Blvd NE, Suite 201  
Albuquerque, NM 87109  
Ph: 505.727.7833

### Providers:

Chris Carter, M.D.	Bridget Coyne, CNP
Julie Farrer, M.D.	Jessica Ryder, PA-C

10511 Golf Course Rd NW, Ste 204  
Albuquerque, NM 87114  
Ph: 505.727.7833

### Providers:

Chinonyerem Enyinna, M.D.	Teresa Casteel, NP
Leslie Monagle, FNP	

500 Walter St NE, Suite 401  
Albuquerque, NM 87102  
Ph: 505.727.7833

### Providers:

Genevieve Davis, CNP	Laura LeBlanc, CNP
----------------------	--------------------

continue...

## General Surgery

715 Dr. Martin Luther King Jr. Ave, NE, Suite 301  
Albuquerque, NM 87102  
Ph: 505.727.7090

### Providers:

Jill Clark, M.D. Craig Gilcrease, PA-C  
David Hoang, M.D. Emily Hunter, PA-C  
Erica McBride, DO Rio Udell, PA-C

6701 Jefferson NE  
Albuquerque, NM 87109  
Ph: 505.727.7050

### Providers:

Michael Blea, M.D., F.A.C.S Amy Bower, PA-C  
Mario Leyba, M.D. Christina Parks, NP  
Corinthian Snodgrass, PA-C Stephen Soltero, PA

4420 Irving Blvd NW  
Albuquerque, NM 87114  
Ph: 505.727.2790

### Providers:

David Freeman, M.D. David May, D.O.  
Reagan Martin, PA-C

## Internal Medicine

6701 Jefferson NE  
Albuquerque, NM 87109  
Ph: 505.727.6200

### Providers:

Rosa Galvez, M.D.

3900 Las Estancias Ct SW  
Albuquerque, NM 87121  
Ph: 505.727.4200

### Providers:

Fredie Diaz, M.D.

4420 Irving Blvd NW  
Albuquerque, NM 87114  
Ph: 505.727.6300

### Providers:

Khadija Mamsa, M.D.

## Interventional Radiology

601 Dr Martin Luther King Jr Ave NE  
Albuquerque, NM 87102  
Ph: 505.835.1615

### Providers:

Matthew Bordegaray, M.D. Kirk Giesbrandt, M.D.

## Medical Oncology

715 Dr. Martin Luther King Jr Blvd. Ste. 102  
Albuquerque, NM 87102  
Ph: 505.727.3040

### Providers:

Muhammad Anas Tarakji, M.D. Paul Brittain, M.D.  
Malcolm H. Purdy, M.D. Jerry Tucker, RD, LD, CLC  
Yubao Wang, M.D.

## Neurology

500 Walter St NE, Suite 401  
Albuquerque, NM 87102  
Ph: 505.727.5910

### Providers:

Kader AbdeleRahman, M.D. Saleem Al Mawed, M.D.  
Vanessa Licona SanJuan, M.D. Daniel Shibuya, M.D.

## Neurosurgery

500 Walter St NE, Suite 401  
Albuquerque, NM 87102  
Ph: 505.727.5910

### Providers:

Mark Bryniarksi, M.D. Mary Elizabeth Trujillo, CNP

## OB-GYN

4705 Montgomery Blvd NE, Suite 301  
Albuquerque, NM 87109  
Ph: 505.727.4500

### Providers:

Addie Gillespie, CNM, FNP-C Melanie Goldberg, CNM  
Patricia A Heinz, CNM Aubrey Huerta, PA  
Alexandra Lusk, M.D. Amy MacLeod, CNM, MSN  
Patrisia Enriquez Najera, CNM Rachel Pirkle, CNM  
Melissa C Scott, DNP, CNM Kara Shain, M.D.  
Jessie Simmon, M.D., MSc Joel Teicher, M.D., FACOG  
Michelle C Underwood, PA-C, MPAS Dhyana K Velasco, M.D.

10511 Golf Course Rd NW, Suite 201  
Albuquerque, NM 87114  
Ph: 505.727.4500

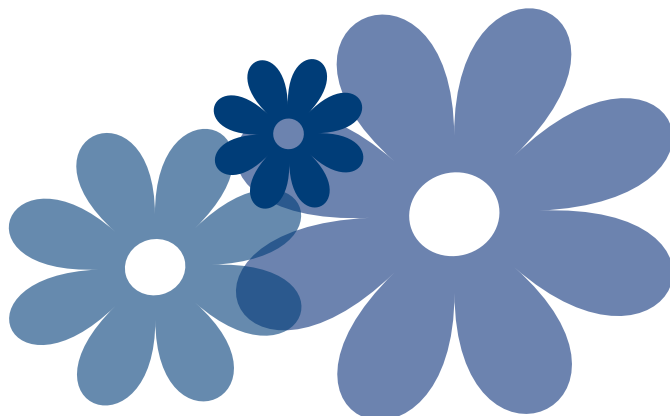
### Providers:

Bethany Barrow, M.D., FACOG Brenda K Beck, CNM  
Patricia Black, M.D. Ashley Jaramillo-Huff, M.D.  
Audra McKillip-Heard, MSN, CNM, RN Candace Minner, CNM

6701 Jefferson NE  
Albuquerque, NM 87109  
Ph: 505.727.4500

### Providers:

Mario Pardo-Friedman, M.D., FACOG Elizabeth Jaffa, CNM  
Melynda Lopez, CNM Valerie Richerson, FNP-C  
Beverly Williams, M.D.



## Orthopedics

101 Hospital Loop NE, Suite 201  
Albuquerque, NM 87109  
Ph: 505.727.4430

### Providers:

Kevin Regan, PA-C Mark Werner, M.D.

500 Walter Street NE, Suite 104  
Albuquerque, NM 87102  
Ph: 505.727.4430

### Providers:

Consuelo J. Apodaca-Crowley, FNP-C Melinda Alfaro-Trombley, PA-C  
Christopher Hanosh, M.D. Patrick Gilligan, M.D.

10511 Golf Course Rd NW, Suite 104  
Albuquerque, NM 87114  
Ph: 505.727.4430

### Providers:

Jayce Powell, FNP

## Pain Clinic

### LOVELACE UNM PAIN MANAGEMENT CLINIC

500 Walter NE, Ste. 213  
Albuquerque, NM 87102  
Ph: 505.727. 7177

### Providers:

Christopher Burton, D.O. Lyn Dawson, CNP  
Ruben Franco, PA-C Craig Naim, M.D.  
Julie Mucbe, M.D.

### LOVELACE PAIN MANAGEMENT CLINIC - WOMEN'S

101 Hospital Loop, Suite 109  
Albuquerque, NM 87109  
Ph: 505.727.4400

### Providers:

Diego Gonzalez, M.D. Lauren Harris, NP

## Plastic Surgery

6701 Jefferson NE  
Albuquerque, NM 87109  
Ph: 505.727.1700

### Providers:

Jeffrey Morehouse, M.D.

## Physical Medicine & Rehabilitation

500 Walter NE, Ste. 500  
Albuquerque, NM 87102  
Ph: 505.727.7177

### Providers:

Zackery Billington, D.O. W. Austin Davis, M.D.  
Rebecca Dutton, M.D. Gwen Lacerda, M.D.  
Emily Miller Olson, M.D.

## Podiatry

10511 Golf Course Rd NW, Suite 104  
Albuquerque, NM 87114  
Ph: 505.727.5001

### Provider:

Seth Launer, DPM, FACAS

## Primary Care

6701 Jefferson NE  
Albuquerque, NM 87109  
Ph: 505.727.6200

### Providers:

Helen Iams, M.D. Rebecca McKee, FNP-C  
Mohan Muvvala, D.O. Debra Ann Narcisse, ANP-C  
Nicole Nunez, NP Katharine Pickett, M.D.  
Chris McLaughlin, M.D. Jennifer Otero, FNP-C  
Valerie Richerson, FNP-C Janis Santistevan, FNP-C  
Lyudmyla Sinyenko, ACNP Vidya Subramanian, M.D.  
Beverly Williams, M.D.

4420 Irving Blvd NW  
Albuquerque, NM 87114  
Ph: 505.727.6300

### Providers:

Diane Wright, FNP John Bond, M.D.  
Christina Chen, M.D. Regina Smith, FNP-C  
Shavonne Truong, FNP-C Mariah Shatto, FNP-C

3900 Las Estancias Ct SW  
Albuquerque, NM 87121  
Ph: 505.727.4200

### Providers:

Luis Guillermo Beverido, M.D. Ximena Galarza-Rios, M.D.  
Naomi Quezada, FNP-C

## Pulmonology & Critical Care

500 Walter St NE, Suite 501  
Albuquerque, NM 87102  
Ph: 505.727.3170

### Providers:

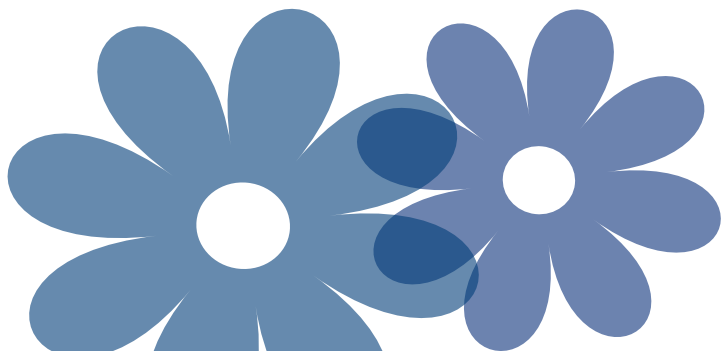
Laura Abeyta, PA-C Trisha Bank, FNP  
Caitlyn Brown, NP Viral Gandhi, M.D.  
Angel Gutierrez, FNP-BC Sandra Gutierrez, CNP  
Camille Hernandez NP Staci Logue, PA  
Jeffrey Mazer, M.D. Robyn Mitchell, APP  
Sivakumar Nagaraju, M.D. Ben Paruchuri, M.D.  
Jason Rotonda, CNP Heather Salazar, CNP  
Derek Sandoval, CNP Tyler Shackelford, D.O.  
Keely Wells, CNP

## Radiation Oncology

4650 Jefferson Ln NE  
Albuquerque, NM 87109  
Ph: 505.727.7900

### Providers:

Ambrosia Simmons, M.D. Patrick Beagen, M.D.



## Radiology - Outpatient

### LOVELACE MEDICAL GROUP - INDEPENDENCE SQUARE

6701 Jefferson NE  
Albuquerque, NM 87109  
Ph: 505.835.1615

### LOVELACE MEDICAL CENTER

601 Dr. Martin Luther King Jr Ave NE  
Albuquerque, NM 87102  
Ph: 505.835.1615

### LOVELACE WESTSIDE HOSPITAL

10501 Golf Course Rd NW  
Albuquerque, NM 87114  
Ph: 505.835.1615

### LOVELACE WOMEN'S HOSPITAL

4701 Montgomery Blvd NE  
Albuquerque, NM 87109  
Ph: 505.835.1615

### HEART HOSPITAL OF NEW MEXICO

504 Elm St NE  
Albuquerque, NM 87102  
Ph: 505.835.1615

### LOVELACE REGIONAL HOSPITAL

117 E. 19th Street  
Roswell, NM 88201  
Ph: 575.625.3371

## Rehabilitation - Outpatient

### LOVELACE UNM REHABILITATION HOSPITAL

505 Elm St. NE  
Albuquerque, NM 87102  
Ph: 505.727.3601

### LOVELACE UNM OUTPATIENT REHABILITATION - SOUTH COORS

4250 Coors Blvd SW, Unit C  
Albuquerque, NM 87121  
Ph: 505.727.4961

### LOVELACE UNM OUTPATIENT REHABILITATION - JEMEZ PUEBLO

129A Canal St  
Jemez Pueblo, NM 87505  
Ph: 505.834.9168

### LOVELACE UNM OUTPATIENT REHABILITATION - RIO RANCHO

111 Rio Rancho  
Rio Rancho, NM 87124  
Ph: 505.727.4950

### LOVELACE UNM OUTPATIENT REHABILITATION - SANTA FE

1692 Hospital Dr, Bldg. B, Suite 202  
Santa Fe, NM 87505  
Ph: 505.727.4971

### LOVELACE UNM OUTPATIENT REHABILITATION - WYOMING

7910 Wyoming Blvd NE, Suite C  
Albuquerque, NM 87109  
Ph: 505.727.4888

### LOVELACE WOMEN'S HOSPITAL OUTPATIENT REHAB

4600 Montgomery Blvd NE  
Albuquerque, NM 87109  
Ph: 505.727.4620

### LOVELACE WOMEN'S HOSPITAL OUTPATIENT REHAB - HAND CLINIC

101 Hospital Loop NE, Suite 206  
Albuquerque, NM 87109  
Ph: 505.727.4657

### LOVELACE WESTSIDE HOSPITAL OUTPATIENT REHAB

10511 Golf Course Rd. NW, Suite 205  
Albuquerque, NM 87114  
Ph: 505.727.2123

### LOVELACE REGIONAL HOSPITAL OUTPATIENT REHAB

117 E. 19th Street  
Roswell, NM 88201  
Ph: 575.625.3372

## Roswell Cardiology

311 West Country Club Road, Ste 1  
Roswell, NM 88201  
Ph: 575.625.3400

#### Providers:

Enoch Agunanne, M.D.

## Roswell Gastroenterology & General Surgery

311 West Country Club Road, Ste 1  
Roswell, NM 88201  
Ph: 575.625.3400

#### Providers:

Paul Torres, M.D.

## Roswell OB/GYN

1112 N. Main St  
Roswell, NM 88201  
Ph: 575.627.4200

#### Providers:

Katrina Dowdy, CNM Sarah Whittington, CNM

## Roswell Orthopedics

115 E. 19th St.  
Roswell, NM 88201  
Ph: 575.625.3300

#### Providers:

Earl Latimer III, M.D. John Thomas, PA-C

## Roswell Primary Care & Pediatrics

1112 N. Main St  
Roswell, NM 88201  
Ph: 575.627.4200

#### Providers:

Sarah East-Brumana, PA-C

1627 S Union Ave  
Roswell, NM 88203  
Ph: 575.625.3240

#### Providers:

Leandra Nier, ACNP-BC Maribel Sanchez, NP

continue...

## Sleep Medicine

500 Walter Street NE, Suite 501  
Albuquerque, NM 87102  
Ph: 505.727.4000

### Providers:

Sivakumar Nagaraju, M.D.

*\*effective 10/1/2024*

6701 Jefferson NE  
Albuquerque, NM 87109  
Ph: 505.727.4000

### Providers:

Colbert Chavez, M.D. Richard Schumann, M.D.

## Urgent Care

6701 Jefferson NE  
Albuquerque, NM 87109  
Ph: 505.727.0600

### Providers:

Kelly Conklin, FNP-C  
Jacqueline Guinn, FNP-C  
Lynn Padilla, FNP-C  
Jeffrey Thomas, M.D.

Brittany Dow, FNP-C  
Liz Kirk, FNP-C  
Holly Stafford, FNP-C

## Urology

6701 Jefferson NE  
Albuquerque, NM 87109  
Ph: 505.727.5080

### Providers:

Jerome Baca, PA-C  
Aaron Geswaldo, D.O.

Heidi Barnes, PA-C  
Andrew Grollman, M.D.

## Urogynecology

6701 Jefferson NE  
Albuquerque, NM 87109  
Ph: 505.727.7200

### Providers:

Brook McFadden, M.D., FACOG, URPS

## Lovelace Hospitals

### LOVELACE MEDICAL CENTER

601 Dr. Martin Luther King Jr. Ave NE  
Albuquerque, NM 87102  
Ph: 505.727.8000

### LOVELACE WOMEN'S HOSPITAL

4701 Montgomery Blvd. NE  
Albuquerque, NM 87109  
Ph: 505.727.7800

### LOVELACE WESTSIDE HOSPITAL

10501 Golf Course Rd.  
Albuquerque, NM 87114  
Ph: 505.727.2000

## HEART HOSPITAL OF NEW MEXICO

at Lovelace Medical Center  
504 Elm Street NE  
Albuquerque, NM 87102  
Ph: 505.727.1100

### LOVELACE UNM REHABILITATION HOSPITAL

505 Elm St. NE  
Albuquerque, NM 87102  
Ph: 505.727.4700

### LOVELACE REGIONAL HOSPITAL

117 E. 19th Street  
Roswell, NM 88201  
Ph: 575.627.7000

## Hospitalists

Ph: 505.727.8360

Serigo Abriola, M.D.  
Sarah Anderson, NP  
Ahmed Alaini, M.D.  
Harkesh Arora, M.D.  
Javed Awais, M.D.  
Dorothy Billau, NP  
Christopher Bradley, M.D.  
Mary Brennan, M.D.  
Radu Butuc, M.D.  
Kimberly Cantu, NP  
David Clanon M.D.  
Kelli Dominguez, CNP  
Michael Elliott, M.D.  
Mark Grinman, M.D.  
Dareena Gurule, NP  
Awais Javed, M.D.  
Bilal Khan, M.D.  
Rodgers Koech, NP  
Ranjit Kumar, M.D.  
Mohammad Malik, DO  
Nemoli McCartney, FNP  
Bernadette Perea-Zamora, NP  
Sathish Ramalingam, M.D.  
Revati Reddy, M.D.  
Clay Schneider, NP  
Christian Smith, DO  
Jay Tseng, M.D.

David Agyapong, M.D.  
Jesse Acosta, FNP  
Vikram Alladi, M.D.  
Banyar Aung, M.D.  
Mario Benavidez, M.D.  
Thomas Boone, M.D.  
Doug Brady, NP  
Devang Butani, DO  
Marshall Caraveo, M.D.  
Violet Chombwe, FNP  
Leah Damiani Strain, M.D.  
Victor Ekpe, M.D.  
Eleni Gianacakes, M.D.  
Prathyusha Gudapati, M.D.  
Patrick Haarhues M.D.  
Norbert Jay Sanidad, CNP  
Robin Knight, M.D.  
Kimberly Kozeliski, NP  
Tahir Mahmood, DO  
Jody Masters, PA-C  
David Podolsky M.D.  
Joseph Perea, M.D.  
Cesar Ramos, M.D.  
Kevin Rosenberg, M.D.  
Amanda Sanchez, D.O.  
Martin Tran, DO

## Emergency General Surgery

Ph: 505.727.7090

Jacquelyn S. Brandenburg, D.O.  
Geri Davis, NP  
David Hoang M.D.  
Alberto Dominguez-Ventura, M.D.  
Marchell Woodruff, PA-C

Lynette Connacher, PA  
Christopher Dominguez, M.D.  
Kimberly Merelman, PA-C  
Norma Walks, M.D.

## COMMERCIAL/EMPLOYER SPONSORED PLANS

---

### Aetna

**Ambetter by Western Sky Community Care** - (Individual and family)

**America's Choice Provider Network**

**Blue Cross & Blue Shield of NM**

**CapRock**

**Cigna** (Roswell only)

**Coventry Health Care National Network** (Roswell only)

**HealthSmart**

**Humana** (Choice and Gold Choice)

**Imagine Health**

**Mesa Mental Health Professionals**

**Molina Healthcare of NM** (Individual and family)

**Multiplan/PHCS**

**New Mexico Oncology Hematology**

**Consultants** (NMOHC) - Employee, family (must verify directly with the payer to determine covered benefits)

**OMNI Networks** (Roswell only)

**Presbyterian Health Plan** (ENT, Gastroenterology, Eye surgery, Rehabilitation services only)

**Provider Network of America** (PNOA)

**Southwest Gastroenterology Associates** (Employee and Family)

**TLC Plumbing** (Employee and family)

**UMR Ardent Employees**

**Zelis** (Primary Direct & Supplemental Network)

## MEDICARE/MEDICARE ADVANTAGE

---

### Aetna Medicare

**Allwell by Western Sky Community Care**

**All Medigap plans that serve secondary to Medicare**

**Blue Cross Blue Shield of New Mexico** (Medicare Advantage and Dual Complete)

**Employer group Medicare plans**

**Humana Medicare Advantage**

**Presbyterian Senior Plan** (Dual Products Only)

**Total Community Care- InnovAge**

**Traditional Medicare and Traditional Medicare/Medicaid Dual Products**

**United Healthcare Medicare Advantage** (Lovelace UNM Rehabilitation Hospital services only)

## MEDICAID/MANAGED MEDICAID (TURQUOISE CARE)

---

**Blue Cross & Blue Shield of NM**

**Presbyterian**

**Total Community Care- InnovAge**

**Molina Healthcare of NM**

**New Mexico Medicaid**

## GOVERNMENT PROGRAMS/WORKMAN'S COMPENSATION (WC)

---

**ChampVA NM**

**Chaves County- Indigent Health Care**

**Community Care Network (CCN)**

**CorVel-WC (CVWC)**

**Corizon Health**

**Coventry Health Care National Network-WC** (Roswell only)

**Correctional Medical Services NM**

**Department of Labor NM**

**Indian Health Services**

**Pueblo of Isleta (POI)**

**Pronet Inmate Health Service**

**Sandoval County Detention**

**Tricare and Triwest**

**US Marshall Services**

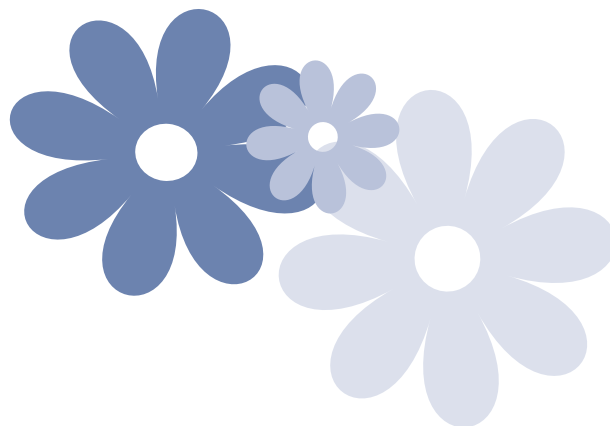
**Veterans Health Administration- Veterans Affairs NM**

**Veterans Choice Program (VPC)**

**Workers Compensation**

**NM Mutual Group**

*For a full list of accepted insurances, visit [lovelace.com](http://lovelace.com)*



Lovelace Health System complies with the applicable Federal civil rights laws and does not discriminate on the basis of race, color, national origin, age, disability or sex.

ATTENCIÓN: si habla español, tiene a su disposición servicios gratuitos de asistencia lingüística. Llame al 1-505-727-8000.

Díí baa akó nínizin: Díí saad bee yáńfti'go Diné Bizaad, saad bee áká'ánída'áwo'dęę', t'áá jiik'eh, éí ná hółq, kojí' hódíílnih 1-505-727-8000.