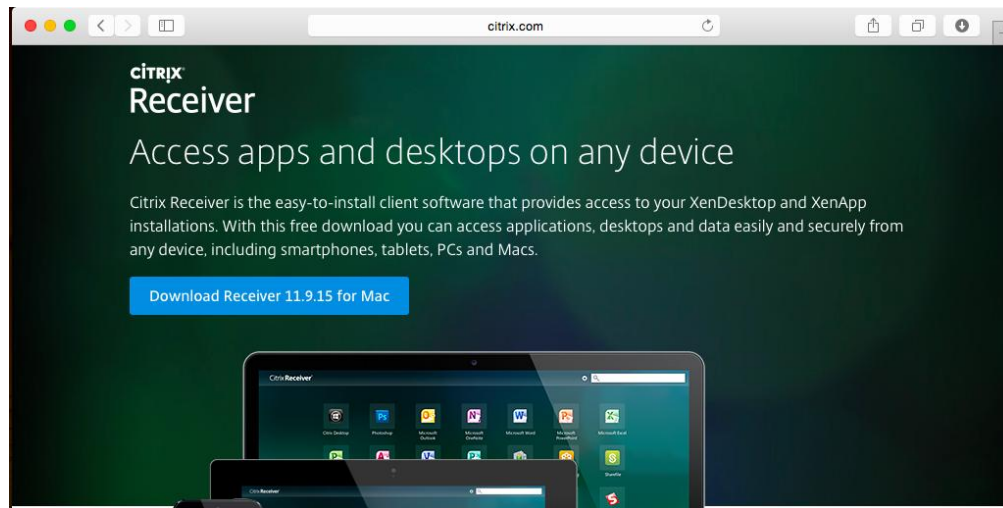
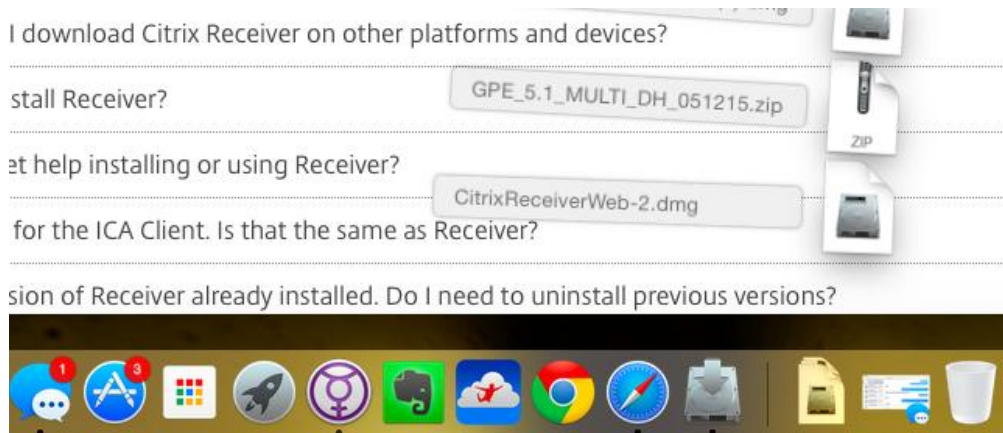


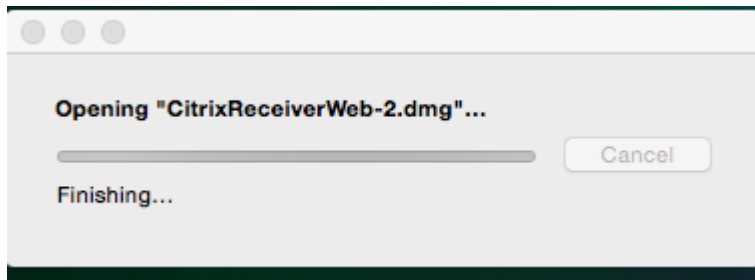
- 1) Open Safari and navigate to <http://receiver.citrix.com>. The site will automatically detect that you are using a Mac, and provide you the appropriate link to download the software.



- 2) Click the link. The software will download automatically. When it is completed, you will find it in the Downloads flyout in the Dock. Expand the downloads flyout, and select CitrixReceiverWeb.dmg



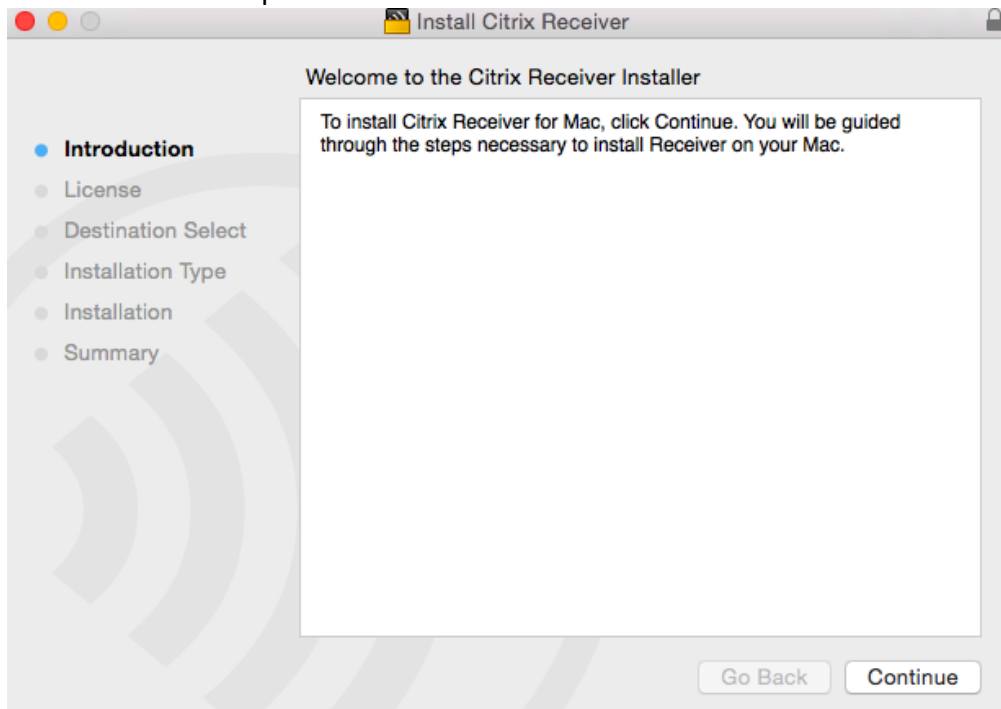
- 3) You will receive a notification that the DMG is opening, after which, it will be available on your desktop.



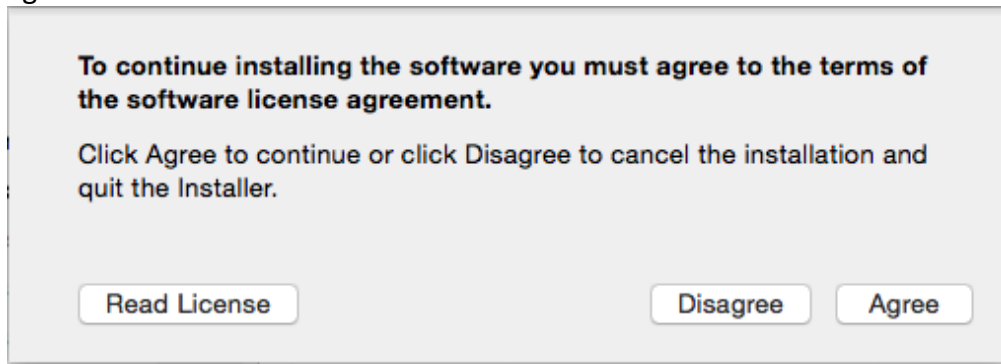
- 4) Double click the Citrix Receiver on your desktop. You will be presented with the option to Install Citrix. Double click the "Install Citrix Receiver" icon.



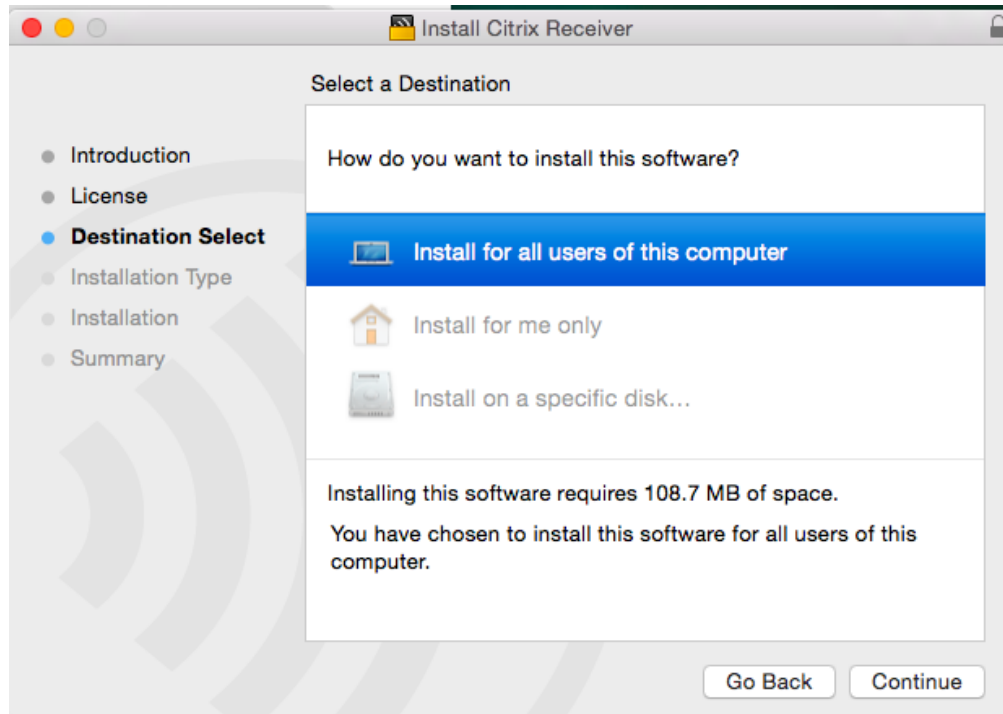
5) Click "Continue" to proceed with installation



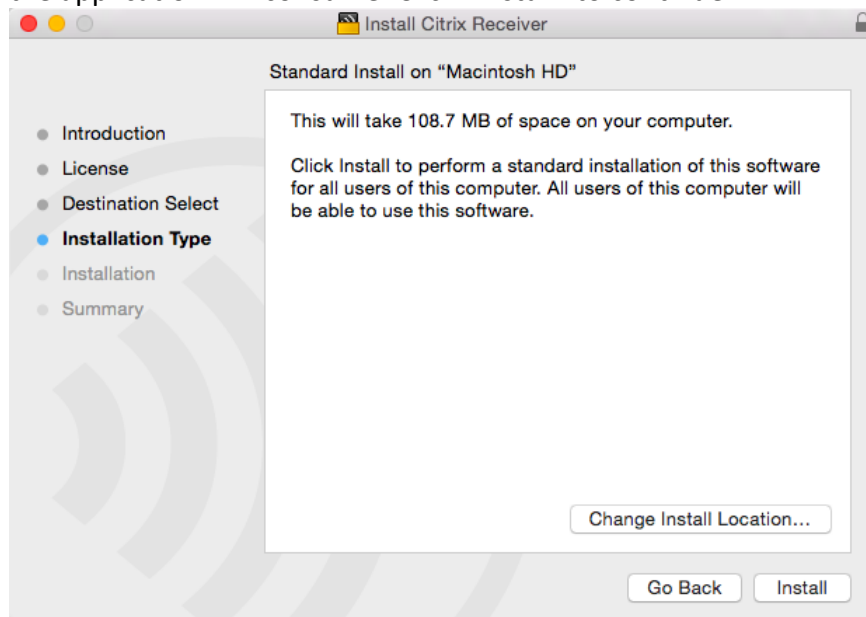
6) When asked, "Agree" to the terms of the software license agreement.



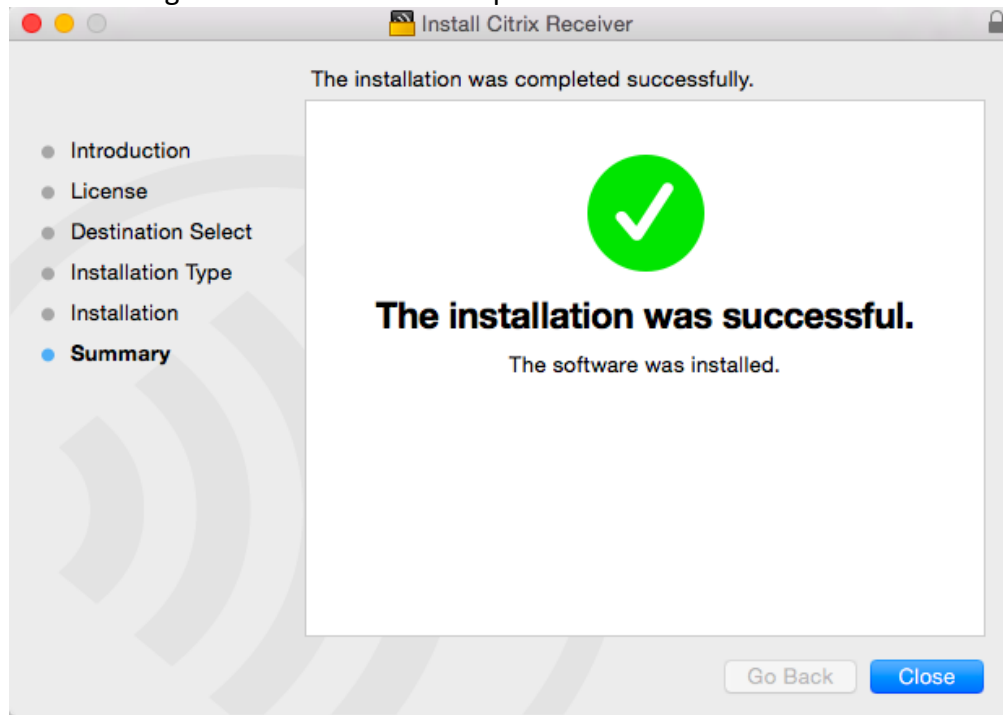
- 7) When asked, choose either “Install for all users of this computer” or “Install for me only” – Keeping in mind, that the second option will not allow any other users on your computer to access Citrix applications. Click “Continue”



- 8) You will receive an information dialog about how much space the application will consume. Click “Install” to continue.

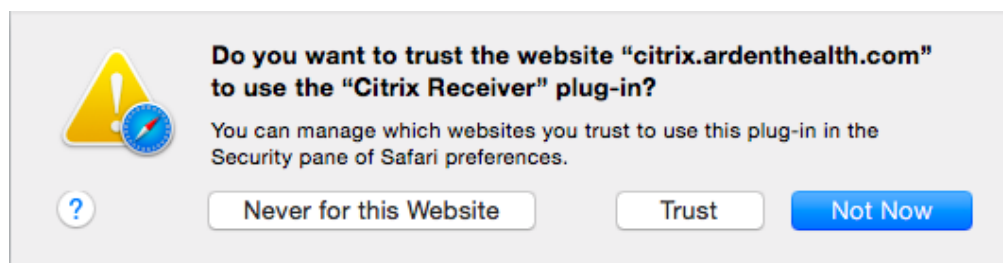


- 9) The installation process will take a few minutes, and you will see the following screen when it has completed.



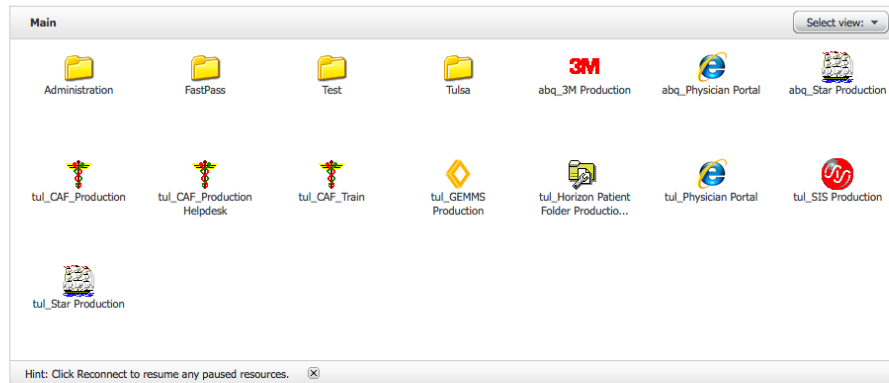
- 10) Go back to Safari, and navigate to <https://citrix.ardenthealth.com>

- 11) You may be presented with the following warning. Click "trust" to allow the Citrix plugin to run. You should not receive this warning on subsequent usages.

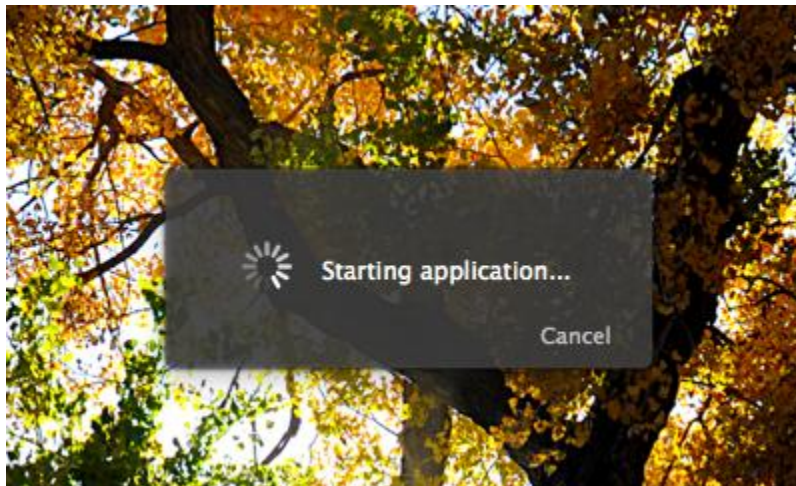


- 12) You will be presented with a login screen. Enter your Active Directory credentials, and click "Log on". After your login is complete, you will see a screen with applications to choose

from.



- 13) Select the appropriate "Physician Portal" icon for your area. You will see a launch screen display briefly, after which, you will see the usual Physician Portal window.



- 14) Log in with your usual credentials.